

Supported by



GTTES

2nd GLOBAL TEXTILE TECHNOLOGY & ENGINEERING SHOW 2019

18th - 20th January, 2019.

Bombay Exhibition Centre, Mumbai, India



INDIA ITME SOCIETY

A Catalyst for Growth & Technological Excellence

Awarded as

India's Top 10 Exhibition Organisers & Amongst Largest B2B Exhibitions





INDIA ITME SOCIETY

A Catalyst for Growth & Technological Excellence



Dear Friends,

After the extraordinary success of GTTES 2015, India ITME Society is all set to strike the right chord for the second time in a row... GTTES 2019. I am pleased to share with you that GTTES events has grown in size and numbers and have achieved 26% growth rate. GTTES 2019 has attracted about 168 companies as first time participants who have never participated in any ITME events. This is a remarkable response to the 2nd edition GTTES, indicating that this event has achieved its place as a reliable international business platform for both domestic and overseas companies.

This Global textile Technology & Engineering Show offers you a wide range of opportunities, from engaging with industry leaders at the highest level, to showcasing your products and services to an international audience. Therefore, having a presence at GTTES 2019 is simply a must for, Companies, Government representatives, Associations, Universities & those connected with the textile machinery world.

Extensive promotional activities were conducted over the last 6 months in India and Overseas, resulting in higher Visitor registrations than the 1st Edition & increased number of countries sending the business delegates to attend the event. We are very pleased to share with you that apart from the regular business delegates we have first time delegates from Chile, Abu Dhabi, Sudan, Ghana, Rwanda, Uganda, Ethiopia, Brazil, Nepal, Tanzania Morocco and Palestine & More.

Apart from the B2B meetings we have industry interactive session with Bureau of India Standards (BIS) to enable the Govt. to have wider and fruitful interaction with the industry from all regions of our country to discuss and thus develop industry friendly policy for promoting exports and imports substitute; control over proliferation of varieties etc. through standardization, certification and testing.

It is my pleasure to extend a cordial invitation to all, to this strategic business event of the year 2019.

With regards,

S. Hari Shankar,

Chairman, India ITME Society.

GTES 2019

The largest and the most prominent
Textile Technology Event
for the year 2019 in India

Connect with

400+ EXHIBITORS

59 BUSINESS DELEGATIONS

48 COUNTRIES

of the Textile Industry

THE BEST CONNECT
FOR FILLING THE GAP BETWEEN

Demand



Supply

Needs



Fulfillment

Problem



Solutions

Sourcing



Partnership

Focus



Strategy



2nd GLOBAL TEXTILE TECHNOLOGY & ENGINEERING SHOW 2019

INTRODUCTION

India ITME Society has hit the right chord with the needs of the Textile Industry through GTES 2019 an exclusive show to capture the World's attention on strengths & opportunities of Global Textile Industry with special focus on Industry segments.

The one & only trade event in India dedicated to magnify business and trade for Textile Machinery manufacturers through interaction with agents / dealers from India and across the Globe.

The Textiles Industry has not only made a major contribution to the national economy in terms of direct and indirect employment generation and net foreign exchange earnings but also contributes about 14 per cent to industrial production 4 per cent to the Gross Domestic Product and 27 per cent to the country's foreign exchange inflows. It provides direct employment to over 45 million people.

The Textiles Sector is the second largest provider of employment after agriculture. Thus growth and all round development of this industry has a direct bearing on the improvement of the India's economy.

In value terms textile & apparel manufacturers would need to invest US \$ 50 Bn in new machinery to cater to the additional market demand and \$ 25 Bn will be required for replacing the existing machinery. A total of US \$ 75 Bn investments in machinery is estimated to be required by 2020.

Yarn manufacturing weaving and processing machinery will attract 58% of the overall investments.



PARTICIPATING COUNTRIES

ABU DHABI	INDIA	SINGAPORE
ALGERIA	INDONESIA	SLOVENIA
ARGENTINA	IRAN	SPAIN
AZERBAIJAN	ITALY	SRI LANKA
BANGLADESH	JAPAN	SUDAN
BELGIUM	KENYA	THAILAND
BRAZIL	KUWAIT	TANZANIA
BURMA	KYRGYZSTAN	TUNISIA
CHILE	MAURITIUS	TURKEY
CHINA	NEPAL	UGANDA
DENMARK	NIGERIA	UNITED ARAB EMIRATES
DJIBOUTI	PAKISTAN	UNITED KINGDOM
EGYPT	PALESTINE	UNITED STATES OF AMERICA
ETHIOPIA	POLAND	UZBEKISTAN
FRANCE	RUSSIA	
GERMANY	RWANDA	
GHANA	SENEGAL	

DAY WISE ITINERARY

Time	Event	Location
------	-------	----------

DAY 1 18th January 2019 - Friday

9.00 am to 5.00 pm	Exhibition	GTES A & GTES B (i.e. Hall 4 & Hall 5)
9.00 am	Lamp Lighting	Opp GTES A Hall
2:30 pm to 3.30 pm	Interactive Session with Bureau of Indian Standards, Govt. of India	Seminar Hall
2.30 pm to 4.30 pm	B2B Meetings with International Delegates	Seminar Hall - Pre-function

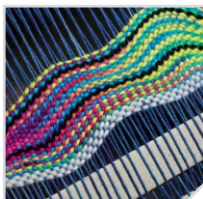
DAY 2 19th January 2019 - Saturday

9.00 am to 6.00 pm	Exhibition	GTES A & GTES B (i.e. Hall 4 & Hall 5)
11.00 am to 12:00 noon	Seminar on ' Investment Opportunities in Ethiopia '	VIP Lounge
9:00 am to 6:00 pm	Conference on ' Technology and Machinery Innovations for Technical Textiles ' by Indian Technical Textiles Association	Seminar Hall (By registration only) Email : contact@ittaindia.org

DAY 3 20th January 2019 - Sunday

9.00 am to 6.00 pm	Exhibition	GTES A & GTES B (i.e. Hall 4 & Hall 5)
9.00 am to 6.00 pm	Conference on ' Educating the Technology Innovations in Textile Colouration ' by Society of Dyers & Colourists	Seminar Hall (By registration only) Email : yogeshg@sdcc.org.uk

EXHIBITS



Spinning Machinery & Spare Parts

Weaving & Embroidery

Garment Making Machinery

**Garments & Other Textile
Processing Machinery**

Technical Textiles

Knitting

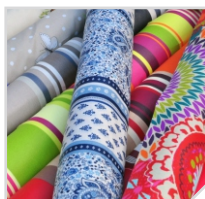
Digital Printing

Dyeing & Finishing Machinery

**Textile Dyes &
Industrial Chemicals**

**Laboratory Testing & Measuring
Equipments (Only Exhibits Sector)**

Software & Design



HALL No.**STALL No.****EXHIBITOR**

EXHIBITORS LIST

A	D44	A SQUARE SOLUTIONS
B	F15	A.T.E. ENTERPRISES PRIVATE LIMITED
A	E37	ADITYA PUBLICATION
A	C20	ADVANCED GRAPHIC SYSTEMS
A	C11A	ADWORLD COMMUNICATIONS
B	F04	AIKI RIOTECH CORPORATION JAPAN
A	E27	ALISON RAPIER TAPE CO.LTD.
A	B22	ALMAC LASER PVT LTD
B	F12A	AMAR JACQUARD
B	F09	AMRITLAKSHMI MACHINE WORKS
A	A11	ANDRITZ ASSELIN-THIBEAU S.A.S
A	A11	ANDRITZ PERFOJET
A	A08	ANJNEY TUBES INDIA
A	D27	APPAREL EXPORT PROMOTION COUNCIL
A	D11	ARAHNE D.O.O
A	D20	ARDMEL MANUFACTURING (PVT) LTD.
A	A13	ARIHANT BELTING PVT. LTD.
A	B23	ARROW DIGITAL PVT LTD
A	E52	ASAPP MEDIA INFORMATION GROUP - INDIAN TEXTILE JOURNAL
A	A09	ASAWA INSULATION PVT LTD
A	C37A	AUSUN MACHINERY CO.LTD
B	F04	AWA SPINDLE CO. LTD
B	F04	BARUDAN CO. LTD. JAPAN
B	F04	BENEKS TAAH.MUH.MUM.MAK.SAN TURKEY
B	F11	BEST IMPEX
A	D10A	BERRY IMPEX INDUSTRIES
A	C17	BIANCO SPA
A	C17	BIANCO TEXTILE SOLUTIONS (I) PVT. LTD
B	F04	BINSFELD ENGINEERING INC
A	D02	BLUE JADE TEXINK PVT LTD
A	B13	BLUE MOON MACHINES MFG.CO
A	B13	BLUESKY ENGINEERING CO.
A	C14	BRITOMATICS INDIA PVT. LTD.
A	A41	BROADENWIN MACHINERY JIANGSU CO.LTD.
A	A24	BRUJAS TEXTILE TECH(SHANGHAI)CO.LTD
A	B11	B-TEX MACHINES
A	D43	BUREAU OF INDIAN STANDARDS (BIS)
A	A11	C + L TEXTILMASCHINEN GMBH
B	F47	C. S. PANCHAL AND CO.
A	B14	CALLEBAUT DE BLICQUY
A	A15	CHANGSHU HONGYI NONWOVEN MACHINERY CO.LTD
A	E10	CHANGSHU SAIL NONWOVEN MACHINERY CO.LTD
B	G09	CHANGSHU SILK ROAD IMP.&EXP. CO.LTD

HALL No.

STALL No.

EXHIBITOR

EXHIBITORS LIST

A	C40	CHANGSHU SUHONG MACHINERY CO.LTD.
B	G15	CHANGSHU TEXTILE MACHINERY WORKS CO.LTD.
A	E41	CHANGZHOU A-ZEN TEXTILE TECHNOLOGY CO.LTD
A	C21	CHANGZHOU CEMK MACHINERY CO.LTD
A	E35	CHANGZHOU CHENYE WARP KNITTING MACHINERY CO. LTD.
A	D23	CHANGZHOU CUIHUA AUTOMATION EQUIPMENTS CO.LTD
B	G24B	CHANGZHOU DIBA TEXTILE MACHINERY CO.LTD
B	G40	CHANGZHOU LONGLONGSHENG WARP KNITTING MACHINERY CO.LTD
A	E16A	CHANGZHOU MASHATE TEXTILE MACHINERY CO.LTD
B	G24	CHANGZHOU VENASSA ELECTRONIC TECHNOLOGY CO.LTD
A	B26	CHEMTEX TECHNOLOGIES PVT. LTD.
B	F04	CIBITEX SRL ITALY
B	F07	CIMA SRI AIRJET SPARES
A	A16	CLASSIC LIFTS
B	F41A	COKER AND ASSOCIATES OF SC LLC USA
A	C09	COLORIX DIGITAL PRINTING SOLUTIONS LLP
A	B02	COLORJET INDIA LIMITED
A	C17	COMTEX ENGG (BOM) PVT LTD
B	F16	CONDAIR PLC
A	D41	CONFEDERATION OF INDIAN TEXTILE INDUSTRY (CITI)
A	D28	CPS IMAGING TECHNOLOGIES
B	F23	D TEX MARKETING
A	C06	DCC PRINT VISION LLP
A	E30	DEALERS FOR YOU PUBLICATIONS
A	A03	DEPARTMENT OF HEAVY INDUSTRY GOVERNMENT OF INDIA
A	A01	DEPARTMENT OF INDUSTRIAL POLICY & PROMOTION (MAKE IN INDIA) MINISTRY OF COMMERCE & INDUSTRY
A	B14	DILMENLER MAKINA
A	D34	"DKTE SOCIETY'S TEXTILE & ENGINEERING INSTITUTE "
A	A11	DN ASSOCIATES
A	C30	DOLLFUS & MULLER
B	F22	DORNIER MACHINERY INDIA PVT. LTD
A	C15	DURST INDIA PVT LTD
A	B14	EASTERN ENGINEERING COMPANY
A	E56	EASTLAND PUBLICATION PVT. LTD. - TEXTILE TRENDS
A	A20	ELGI EQUIPMENTS LIMITED
B	F04	ELTEKSMAK DRYING TECHNOLOGIES TURKEY
A	E21	ENGINEERING EXPORT PROMOTIONAL COUNCIL OF INDIA (EEPC)
B	F08	ESSR ELECTRONIC JACQUARD MANUFACTURING COMPANY
A	C23	EXCEL INDUSTRIAL GEARS PVT. LTD.
A	A11	FARE S.P.A.
A	B14	FERRARI EASTERN FANS INDIA PRIVATE
A	B15A	FLARETECH

HALL No.

STALL No.

EXHIBITOR

EXHIBITORS LIST

A	E24	FOSHAN CHIYANG MECHANICAL EQUIPMENT CO.LTD
A	D01	FUJIAN JILONG MACHINE TECHNOLOGIES CO.LTD
A	A29	FUSION INDUSTRIES LIMITED
B	H01A	GAO YANG COUNTY HUIQIANG TEXTILE MACHINERY MFG. CO.LTD.
A	A26	GLOBAL ORGANIC TEXTILE STANDARD (GOTS)
B	F41A	GLOBAL TEXTILE MACHINERY
B	F38	GLOBAL TEXTILE MACHINERY MFG.CO.
B	F43	GLOBAL TEXTILE MACHINERY MFG.CO.
A	B03	GOPAL ENGINEERING CO
A	A05	GOVERNMENT OF INDIA MINISTRY OF TEXTILES
A	B14	GRAUTE GMBH
A	A11	GROZ-BECKERT KG
B	F12	H K FABRICS
A	A35	HAINING JOVIAN TEXTILE MACHINERY CO. LTD.
A	D26	HAINING TEXTILE MACHINERY CO. LTD.
A	E11	HANGZHOU LIN-TEX TEXTILE MACHINERY CO.LTD.
A	E28	HAPPY EXIM
A	D10	HARDIK ENTERPRISE
B	F08B	HICORP MACHINERY (QINGDAO)CO.LTD.
A	E03	HIGHNESS MICROELECTRONICS PVT LTD
B	G04	HINDTEX INDUSTRIES
A	B24	HMSU ROLLERS INDIA PVT LTD
A	C13	HONGSAM DIGITAL SCIENCE & TECHNOLOGY CO. LTD
A	E57	INDIAN TECHNICAL TEXTILE ASSOCIATION (ITTA)
A	D38	INDIAN TEXTILE ACCESSORIES & MACHINERY MFRS. ASSOCIATION (ITAMMA)
A	B09	INDIGO PRINTS SMART PVT LTD
B	F04	INDITECH INTERNATIONAL
A	E43	INDO AFRICAN CHAMBER OF COMMERCE & INDUSTRY
A	E44	INDO-POLISH CHAMBER OF COMMERCE & INDUSTRY
A	A17	INDUSTRIAL BOILERS LTD.
A	E32	INNOVATIVE MEDIA & INFORMATION COMPANY - TEXTILE VALUE CHAIN
A	B17	INSPIRON ENGG PVT LTD
A	E53	INSTITUTE OF CHEMICAL TECHNOLOGY (ICT)
B	F04	IRICO GUALCHIERANI HANDLING S. ITALY
A	B15	J. SCHLENTER PRODUCTION GMBH
A	A04	JACOBI MACHINERY PRIVATE LIMITED
A	E01	JAI ASHAPURA HYDRAULICS
A	B08A	JAI GRAPHITECH CO
A	B06	JAY INSTRUMENTS AND SYSTEMS PRIVATE LIMITED
A	C08	JAYSYNTH DYESTUFF (INDIA) LTD.
A	C07	JETSTAR INNOVATIONS (P) LTD
A	A24A	JEYALETSHMI MACHINE WORKS
A	A44	JIANGSU NANGEST BELTING CO. LTD

HALL No.

STALL No.

EXHIBITOR

EXHIBITORS LIST

B	G18	JIANGSU QIANJIAHUI TEXTILE MACHINERY CO.LTD
A	D16	JIANGSU REDFLAG PRINTING & DYEING MACHINERY CO.LTD
B	H04	JIANGSU RUNYUAN HOLDING GROUP CO.LTD.
B	G10	JIANGSU S & S INTELLIGENT SCIENCE AND TECHNOLOGY CO. LTD.
A	D08A	JIANGSU SAGA TEXTILE MACHINERY CO.LTD
A	B29	JIANGSU SUHO HONGRY IMPORT & EXPORT CO.LTD.
B	G32	JIANGSU XIANGDAO PRECISION MACHINERY CO. LTD.
A	C33	JIANGSU YUANHUA LIGHT EQUIPMENT CO.LTD
B	F31	JIANGYIN 4 STAR KAJI IZUMI MACHINERY CO.LTD.
A	E15	JIANGYIN CITY YONGXIN PRINTING & DYEING MACHINERY CO.LTD.
A	C21	JIANGYIN DEKE TEXTILE MACHINERY MANUFACTURING CO.LTD
B	G27	JIANGYIN TONGYUAN TEXTILE MACHINERY CO.LTD.
A	E23	JIANGYIN WEIYU RIYI MACHINERY CO.LTD.
A	D33	JINCHANG YUHENG NICKEL SCREEN CORPORATION
A	A14	JINDAL RECTIFIERS
B	F51	JINENDRA ENTERPRISES
A	C08	JISL & JAYSYNTH
A	C16	JOGINDRA INDUSTRIES PVT LTD
A	D40	JOURNAL OF THE TEXTILE ASSOCIATION
A	D24	JUPITER ENGINEERING
A	A18	JVD MACHINES
B	F15	KARL MAYER TEXTILMASCHINENFABRIK GMBH
A	C17	KARL MENZEL MASCHINENFABRIK GMBH & CO.
B	F04	KASEN NOZZLE INC
A	D06	KNITON TRADERS
B	F18	KONICA ELECTRONICS ENTERPRISE
A	C10	KOTHARI INFOTECH P. LIMITED
B	F41	KRISHNA ENGINEERING
B	G05	KUNSHAN PUSHENG TCCHNOLOGY.CO.LTD
A	A11	LACOM GMBH
A	C17	LAFER SPA /ITALY
A	A06	LAKSHMI CARD CLOTHING MFG CO PVT LTD
A	A07	LAKSHMI MACHINE WORKS LIMITED
A	A10A	LANGXI ZHENHAI MACHINERY CO.LTD
A	A11	LAROCHE S.A.
A	E29	LASER TECHNOLOGIES PVT LTD
A	B07	LATHIA RUBBER MFG. CO. PVT. LTD.
B	F06	LAXMI SHUTTLELESS LOOMS PVT. LTD.
A	C28	LEO RUBBER INDUSTRIES
B	G20	LGL ELECTRONICS S.P.A.
A	B36	LIANYUNGANG RUNIAN INDUSTRIAL CO.LTD
A	B19A	LIANYUNGANG TIANYOU TEXTILE MACHINERY CO.LTD
B	F02	LIFEBOND MACHINES PVT LTD.

HALL No.**STALL No.****EXHIBITOR**

EXHIBITORS LIST

B	F08A	LONGKOU SUNNING MOULDING CO.LTD
A	B01	LUWA INDIA PVT. LTD.
A	A27	M J CHEMICALS
A	D04	MAHALAXMI TEXTILES
A	A02	MAHARASHTRA STATE GOVERNMENT TEXTILE DEPARTMENT
A	A30	MANVI TEXTILE AIR ENGINEERS PVT.LTD
A	A11	MARIPLAST S.P.A.
A	A28	MAXWORTH
B	F32	MAYUR REEDS AND HEALDS PRIVATE LIMITED
A	A25	MEERA INDUSTRIES LIMITED
A	C17	MENZEL ENGG INDIA PVT LTD
A	A19	MICRO TOUCH
A	B14	MONTI ANTONIO ITALY
A	A11	MORCHEM S.A.U.
A	A11	N. SCHLUMBERGER
A	B30	NANTONG BRAUN MACHINERY CO. LTD
B	F52	NARINDER INTERNATIONAL
A	D31A	NATIONAL INSTITUTE OF FASHION TECHNOLOGY - NIFT
B	G08	NEEDLES & ELEMENTS INDIA PVT LTD
A	A10	NEW ARADHANA POLY PLAST IND.
A	E25	NINGBO HANGHAI TEXTILE MACHINERY CO.LTD.
B	F05	NIUPAI TEXTILE MACHINERY CO.LTD. JIANGSUCHINA
B	F46	NPS DRIVE AUTOMATION PVT. LTD.
B	G28	OKOSU CERATECH PVT LTD
B	F21	OM TEXTILE SOLUTION
B	F39	PARAMVEER TRADING CO.
A	D12	PAL ASSOCIATED
B	F44	PERFECT TEXTILE SOLUTIONS
A	C12	PHOTOKINA CHEMICALS PVT LTD
B	G23	PINNACLE INTERNATIONAL
A	B32	POLYTEX CHEMICAL ENGINEERING CO.LTD.
B	F40	POOJA ENTERPRISES
A	E51	POWERLOOM DEVELOPMENT & EXPORT PROMOTION COUNCIL
B	F29	PRASHANT GAMATEX PVT LTD
A	D31	PREMIER COLORSCAN INSTRUMENTS PVT LTD
B	G01	PREMIER LOOMS MANUFACTURERS PVT. LTD.
B	G26	QINGDAO DRDE MACHINERY AND TECHNOLOGY CO. LTD
B	G16A	QINGDAO HAIJIA MACHINERY CO.LTD.
A	C21	QINGDAO SHENGSHIYNCHUN MACHINERY CO.LTD
B	G07	QINGDAO TIANYI GROUP RED FLAG TEXTILE MACHINERY CO.LTD
A	C35	QINGDOA DARLEY INTERNATIONAL CO.LTD
A	C19	R.B.ELECTRONIC & ENGINEERING PVT LTD
B	F50	R.R.ENTERPRISES

HALL No.**STALL No.****EXHIBITOR**

EXHIBITORS LIST

B	G33	RAJ TEXTILE CORPORATION
B	G30	RAKESH INDUSTRIES
A	D17	RAMP IMPEX PVT. LTD.
B	F03	RAYZ MACHINES
B	F27	RD JACTEX INDIA
A	A36	RENQIU FEIXING TEXTILE MACHINERY CO.LTD
A	C26	ROSSARI BIOTECH LIMITED
A	E54	SAFFORN KANI SHAWLS PASHMINA HANDLOOMS
A	B25	SANARCO ENGINEERING PRIVATE LIMITED
A	D18	SANJ TEXTILES PVT LTD
A	A23	SANTHOSH MARKETTING
A	A11	SCHMAUSER PRECISION GMBH
B	G20	SCHOCH REEDS INDIA P.LTD.
A	A11	SCHOTT & MEISSNER
A	D45	SDC INTERNATIONAL LIMITED
A	D03	SHANGHAI KEYCHENG PRINTING MACHINERY CO.LTD
B	G24A	SHANGHAI NIUQI NETWORK TECHNOLOGY CO LTD
B	G17	SHANGHAI XIANGHAI BRAIDING MACHINE CO.LTD
A	D21	SHAOXING XIANGMING MACHINERY TECHNOLOGY CO.LTD
B	F26	SHAOXING XINHUA TEXTILE MACHINERY CO. LTD
A	B22	SHELTON MACHINES LTD
B	F19	SHOBAPRAD MACHINERY LLP
B	F24	SHREE MARUTI INTERNATIONAL
A	B22	SHELTON MACHINES LTD
B	F45	SHREE SULZTEX SPARES PVT LTD
B	F01	SHREETEX ENGINEERS
A	B16	SHREETEX MACHINES
B	F48	SHU YANG SHENGBO KNITTING MACHINERY CO. LTD
A	A04	SIMTA CLEAR COATS PRIVATE LIMITED
A	A04	SIMTA MACHINERY PRIVATE LIMITED
A	A04	SIMTA MANUFACTURING COMPANY
B	F04	SLACK & PARR
B	F33	SMART TEX
A	C18	SURESH INDU LASERS PVT LTD
A	D06A	SPIN AIR SYSTEMS COIMBATORE PVT LTD
A	A34A	SPINNING TEXTILES
A	D39	SSS MEDIA PUBLICATIONS PVT. LTD. - TEXTILE WORLD
B	G06	STAUBLI INDIA PVT. LTD.
B	G31	SUPERTECH ENGINEERING
B	G19	SURYA INTERNATIONAL
B	G19	SURYA MILLGIN STORES
A	B08	SUSHIL ENTERPRISES- DESIGN BOOKS UNLTD
A	E47	SUVIN ADVISORS PVT. LTD.

HALL No.

STALL No.

EXHIBITOR

EXHIBITORS LIST

B	G39	SUZHOU AIR-JET LOOM PRECISE TEXTILE EQUIPMENT CO.LTD
A	D13	SUZHOU JWELL POLY ENGINEERING CO.LTD
A	B20	SUZHOU TITA MACHINERY MANUFACTURING CO.LTD
A	A42	SUZHOU XINEFANG TEXTILE MACHINE ELECTRICITY.CO.LTD.
A	B28	SUZHOU YOU LIAN TEXTILE EQUIPMENT TECHNOLOGY CO.LTD.
B	G41	SUZHOU ZHONGHUA GARMENT ACCESSORIES LIMITED
A	E49	SVKM'S NMIMS SHIRPUR CAMPUS - CTF
A	E59	SVVV UNIVERSITY
B	F28	SWISS FORMULATIONS
B	F38	TAINING MACHINERY INDUSTRIAL
B	G12	TAKAYAMA REED CO. LTD.
B	F25	TARASVAT INDUSTRIAL ELECTRONICS
A	E20	TEC MACHINERY JIANGSU CO.LTD.
B	F34	TECHNOCRAFT INDUSTRIES
A	E42	TECOYA TREND
B	F10	TEX US
A	B10	TEXFAB ENGINEERS INDIA PVT LTD
A	B27	TEXFAB ENGINEERS INDIA PVT LTD
A	C27	TEXSPARES MACHINE WORKS
A	D36	TEXTILE MACHINERY MANUFACTURERS' ASSOCIATION (I) (TMMA)
A	E50	TEXTILE MIRROR
A	E07	TEXTILES COMMITTEE GOVT.OF INDIA
A	D11	TEXWARE TECHNOLOGY
B	F30	TEXZIUM INTERNATIONAL PVT. LTD.
B	G29	TEXZIUM INTERNATIONAL PVT. LTD.
A	D32	THE BOMBAY TEXTILE RESEARCH ASSOCIATION (BTRA)
A	E18	THE COTTON TEXTILES EXPORT PROMOTION COUNCIL [TEXPROCIL]
A	D25	THE NATIONAL SMALL INDUSTRIES CORPORATION LTD.
A	E55	THE SYNTHETIC & ART SILK MILLS RESEARCH ASSOCIATION (SASMIRA)
A	D42	THE SYNTHETIC & RAYON TEXTILE EXPORT PROMOTION COUNCIL (SRTEPC)
A	D40	THE TEXTILE ASSOCIATION (INDIA)
A	E58	THE TEXTILE MAGAZINE
A	A34	TIMES INTERNATIONAL
B	F04	TMT MACHINERY INC. JAPAN
B	G11	TONGXIANG GIANT STAR KNITTING MACHINERY CO. LTD
A	C30	TRANS WORLD MARKETING
B	G12	TRANS WORLD MARKETING
A	C05	TRUE COLORS IMPEX
B	F04	TSUDAKOMA CORP. JAPAN
A	C27	UMARGAON TEXTILE MACHINERY PVT. LTD
A	A11	VALVAN BALING SYSTEMS NV
A	E45	VAPI INDUSTRIES ASSOCIATION
B	F04	VB SOLUZIONI E TECNOLOGIE SRL.

HALL No.

STALL No.

EXHIBITOR

EXHIBITORS LIST

A	B12	VEE KAY ENTERPRISES
A	A33	VEERMATA JIJABAI TECHNOLOGICAL INSTITUTE
A	D30	VERODATATEX INDIA PVT LTD
A	D09	VERTEX EDGE TECH
A	A22	VIRAL ENTERPRISE
B	F49	VPR ENTERPRISES
B	G02	WEAVETECH ENGINEERS LTD
B	F28A	WORLD IMPEX INC
B	F35	WUXI GOLDEN SUN NEW TEXTILE COROLLARY EQUIPMENT CO.LTD
A	B31	WUXI HONGFEI INDUSTRIAL AND COMMERCIAL CO.LTD
A	D07	WUXI HONGHAO INT'L CO.LTD
A	D08	WUXI WANFANG DYEING AND FINISHING MACHINERY CO. LTD
A	A39	XINCHANG LANXIANG MACHINERY
A	C34	XINCHANG WANHENG TECHNOLOGY CO.LTD
A	E22	XINCHANG WEILITE TEXTILE MACHINERY CO.LTD
A	E19	XINCHANG ZHENXING TEXTILE MACHINERY CO.LTD
B	G21	XUZHOU HENGHUI BRAIDING MACHINE CO LTD
A	C24	YALE SYNTHLUBE INDUSTRIES
A	B05	YAMUNA MACHINE WORKS LTD
B	H02	YANTAI XINYANG ELECTRONICS CO.LTD
A	D05	YASH DIGITAL
A	D12	YILI ELETRONICS CO. LTD.
A	E14	YIWU AURORA MACHINERY CO.LTD
A	E26	YONGXUSHENG MECHANICAL & ELECTRICAL TECHNOLOGY (CHANGZHOU) CO.LTD.
A	E33	YUEQING LEJIAN TEXTILE MACHINERY CO.LTD
A	E17A	YUEQING ZHEOU CEMENTED CARBIDE CO.LTD
A	E12	YUYAO ZOWIE TEXTILE MACHINERY CO.LTO
B	F17	ZEON BELTS PVT LTD
A	E08	ZHANGJIAGANG LONGJUN MACHINERY CO.LTD
A	D19	ZHANGJIAGANG TENGXIANG MACHINERY CO.LTD
A	A12	ZHANGJIAGANG YONGXING MACHINERY CO. LTD.
A	C22	ZHEJIANG BORETECH ENVIRONMENTAL ENGINEERING CO. LTD.
B	G27A	ZHEJIANG HAIYING TEXTILE MACHINERY CO.LTD
A	B19	ZHEJIANG HEJIAN PRECISION MACHINERY CO.LTD.
B	F42	ZHEJIANG KAICHENG TEXTILE MACHINERY CO.LTD
A	C29	ZHEJIANG KANGLI AUTOMATION TECHNOLOGY CO LTD
A	C32	ZHEJIANG LUOXING INDUSTRIAL CO. LTD
B	F36	ZHEJIANG QIFANG MACHINERY CO.LTD
B	H01	ZHEJIANG RUIHUA MACHINERY CO.LTD
B	F37	ZHEJIANG SUN JACQUARD CO.LTD
A	A32	ZHEJIANG WANSHIFA TEXTILE MACHINERY CO.LTD
A	C31	ZHEJIANG WANSHIXING MACHINERY CO. LTD.

EXHIBITORS LIST

A	C37	ZHEJIANG WEIFENG MACHINERY CO.LTD
A	E16	ZHEJIANG WEIYING INTELLIGENT TECHNOLOGY CO.LTD.
B	G18A	ZHEJIANG XINHUI TEXTILE MACHINERY CO.LTD
A	E17	ZHEJIANG YUEJIAN INTELLIGENT EQUIPMENT CO. LTD.
A	A37	ZHEJIANG YUFENG MACHINERY CO.LTD.
A	A31	ZHENGZHOU VOWA MECHANICAL CO.LTD
A	B34	ZHENGZHOU ZHONGYUAN DRYING TECHNIQUE CO.LTD
A	D35	ZHENJIANG NEW TIDE INTERNATIONAL TRADING CO.LTD.
A	C15	ZSCHIMMER & SCHWARZ

HALL A - CAFETERIA FOOD MENU

QUICK BITES	
Misal Pav	80.00
Samosa (2 pc)	60.00
Samosa Chole	90.00
Pav Bhaji	150.00
Pav Extra	20.00
Chole Kulcha	150.00
Extra Kulcha	20.00

CAFÉ DAY	
HOT BEVERAGES	
Coffee	40.00
Espresso	100.00
Cappuccino	100.00
Café Latte	100.00
Mocha	120.00
TEA	
Masala Tea	30.00
Black Tea	40.00
Lemon Tea	40.00
Green Tea	40.00
COLD BEVERAGES	
Cold Coffee	100.00
Mochacinno	150.00
Iced Tea	80.00

HURRYCANE	
Fr Sugarcane Juice - Big Btl	100.00
Fr Sugarcane Juice - Small Btl	80.00
Fr Sugarcane Juice - Big Glass	70.00
Fr Sugarcane Juice - Small Glass	50.00

QUENCH	
Soft Drink Can	MRP
Minute Maid	MRP
Water 500ml	MRP
Water (200 ml x 35 nos)	210
Buttermilk	40
Lassi	60

CHINA TIMES	
Fried Rice/Noodles Combo Veg	100.00
Fried Rice/Noodles Combo Chicken	80.00

DOMINO'S	
PIZZA	6"/10"
Cheese Margherita	150 / 350
Veg Delight	200 / 450
Peppy Paneer	300 / 550
Barbeque Chicken Pizza	300 / 550
Spicy Chicken	300 / 550
SIDE ORDER	
Veg Burger	140.00
Non Veg Burger	200.00
Choco Lava Cake	110.00

0 DEGREE ICE CREAM	
All Flavours	80.00
Waffle Cone	10.00

COMBO'NATION	
Biryani : Chicken Tikka	250.00
Biryani : Baida (Egg)	200
Biryani : Subz & Paneer Tikka	250.00
Paratha : Murgh Lababdar (3 Parathas)	200
Paratha: Paneer Lababdar (3 Parathas)	200

CHETTINAD EXPRESS	
Idli	80.00
DOSA	
Dosa : Sada	80.00
Dosa : Masala	100.00
Dosa : Mysore Sada	100.00
Dosa : Mysore Masala	120.00
Dosa : Butter Cheese Masala	120.00
Dosa : Butter Cheese	110.00

DAILY DELI	
Grilled Veg Sandwich	150
Grilled Veg Sandwich with Cheese	170
Grilled Chicken Sandwich	180
Grilled Chicken Sandwich with Cheese	200
Grilled Chicken	250
Cottage Cheese Grilled	200
WRAPS	
Vegetable Wraps	100
Cheese & Vegetable Wraps	120
Chicken Wraps	120
Cheese & Chicken Wraps	140

HALL B - CAFETERIA FOOD MENU

QUICK BITES	
Misal Pav	80.00
Samosa (2 pc)	60.00
Samosa Chole	90.00
Pav Bhaji	150.00
Pav Extra	20.00
Chole Kulcha	150.00
Extra Kulcha	20.00

QUENCH	
Soft Drink Can	MRP
Minute Maid	MRP
Water 500ml	MRP
Water (200 ml x 35 nos)	210
Tea	40
Coffee	40

DOMINO'S (HOT CASE) - Subject to availability	
PIZZA	6"/10"
Cheese Margherita	200
Veg Delight	200
Peppy Paneer	250
Pepper Barbeque Chicken	200
Peri Peri Chicken	250

0 DEGREE ICE CREAM	
All Flavours	80.00
Waffle Cone	10.00

HURRYCANE	
Fr Sugarcane Juice - Big Btl	100.00
Fr Sugarcane Juice - Small Btl	80.00
Fr Sugarcane Juice - Big Glass	70.00
Fr Sugarcane Juice - Small Glass	50.00

CONSULATES INFORMATION

CHINA

11th Floor, Nariman Bhavan, Barrister Rajni Patel Marg,
Nariman Point, Mumbai 400021

TAIWAN

World Trade Centre Unit 8, 11th Floor, Centre 1,
Cuffe Parade, Mumbai 400 005 ☎ (+91) 22 2216 3074

UK

Naman Chambers, C/32, G Block, Bandra Kurla Complex,
Bandra (East), Mumbai 400051 ☎ 022 6650 2222

USA

C49, G Block Rd, G Block, Bandra Kurla Complex,
Bandra (East), Mumbai 400051 ☎ 022 2672 4000

ITALY

Kanchenjunga, Building 72, G. Deshmukh Marg,
Cumballa Hill, Mumbai 400026

SOUTH KOREA

12th Floor, Lodha Supremus, Dr. E Moses Road,
Worli Naka, Mumbai 400018 ☎ 022 6147 7000

GERMANY

Hoechst House, 9th Floor, 193, Back bay Reclamation,
Nariman Point, Mumbai - 400021 ☎ 022 2283 2422

ETHIOPIA

Office No. 806, 8th Floor, Naman Midtown,
B Wing, Plot no. 616, Senapati Bapat Marg, Elphinstone (W),
Near India Bulls Financial Centre, Mumbai - 400013 ☎ 022 2438 2258

SUDAN

Plot No- 3, Satya Marg, Shantipath, Chanakyapuri, New Delhi - 110021
☎ 011 2687 3185

PAKISTAN

No. 2/50-G, Ramnagar, Chanakyapuri, New Delhi - 110021 ☎ 011 2611 060

BANGLADESH

Bungalow No.8, Jolly Maker, 3 GD Somani Road,
Chamundeshwari Nagar, Cuffe Parade, Mumbai - 400005 ☎ 022 2218 0101

SRI LANKA

34, Ground Floor, Mulla House, Homi Modi Street,
Opp. Central Bank Head Office, Mumbai - 400001 ☎ 022 2204 5861

EGYPT

101, Benhur Apartments, 32 Narayan Dabholkar Rd,
Navshanti Nagar, Malabar Hill, Mumbai - 400006 ☎ 022 2367 6407

MOZAMBIQUE

16/1, Basant Lok, Vasant Vihar, New Delhi - 110070 ☎ 011 4339 9777

SPAIN

Express Towers, 3rd Floor, Barrister Rajni Patel Marg, Nariman Point
Mumbai - 400021 📞 022 2288 0213

UNITED ARAB EMIRATES

Bungalow No.7, Jolly Maker Apartment No. 1,
Cuffe Parade, Colaba, Mumbai - 400005 📞 022 6634 5566

JAPAN

Plot No.1, M. L. Dahanukar Marg,
Cumballa Hill, Mumbai - 400026 📞 022 2351 7101

IRAN

47, Swapna Lok, Nepeansea Road ,
August Kranti Marg, Mumbai - 400036 📞 022 6688 7070

AUSTRALIA

Plot C 38-39, Bandra Kurla Complex, Opp MCA Cricket Club, Level 10,
A Wing, Crescenzo Building, G Block, Mumbai - 400051 📞 022 6757 4900

BELARUS

F6/8B, Vasant Vihar, New Delhi - 110057 📞 011 4052 9338

ICELAND

7, 3rd Floor, Walton Road, Apollo Bandar, Mumbai - 400001 📞 022 2285 6161

MALAYSIA

5th Floor, Notan Classic Building, 24th Road, Off Turner Road,
Bandra (West), Mumbai - 400050 📞 022 2645 5752

NIGERIA

EP.4, Chandraupta Marg, Chanakyapuri, New Delhi - 110021 📞 011 2412 2143

SYRIA

D 5/8, Vasant Vihar, New Delhi - 110057 📞 011 2614 0233

THAILAND

12th Floor, Express Towers, Barrister Rajni Patel Marg,
Nariman Point, Mumbai - 400021 📞 022 2282 3535

YEMEN

Door No. 102/ A, 10th Floor, Maker Tower F Wing,
GD Somani Marg, Cuffe Parade, Mumbai - 400005 📞 022 2218 3956

SOUTH AFRICA

Gandhi Mansion, 20 Altamount Road, Mumbai - 400026 📞 022 2351 3725

INDONESIA

19, Altamount Road, Cumballa Hill, Mumbai - 400026 📞 022 2351 1678

TUNISIA

A9A/6, Vasant Vihar, Air India Colony,
Indian Air Lines & Air India Estate, New Delhi - 110057 📞 011 2614 5346

NEPAL

Barakhamba Rd, Vakil Lane, Mandi House, New Delhi - 110001 📞 011 2347 6200

EMERGENCY NUMBERS

POLICE STATIONS

Police Station	100
Goregaon (West)	022 2872 3252 / 2722495
Goregaon (East)	022 2686 1677
Jogeshwari (West)	022 2632 3861
Jogeshwari (East)	022 2822 1672

FIRE - 101

HOSPITALS

Sai Sprash Multi Speciality Hospital & Accident Center (For Cardiac Patient)

1st Floor Green Lawn apartment Opp. St. Payas College, Aarey Road Goregaon (East) Mumbai-4000 063.
Dr. Anil Vishwakarma - 9820810541

Balaji Multi Super Speciality Hospital

Near Pathan Wadi Fly Over W.E. Highway Malad (East) Mumbai.
Mr. Sayyed (Administration Officer) - 9223326162 / 9819687162

Hindu Hruday Samrat Balasaheb Thackerey Trauma Care Municipal Hospital

Opp. SRPF Camps Western Express Highway Bandrekar Wadi Jogeshwari East Mumbai- 400060 Tel. No. 2822 4081

SITE HELP DESK

Ganesh Parkar - 9820426564
Siddharth Ambasana - 9930225163

ORGANISER OFFICE

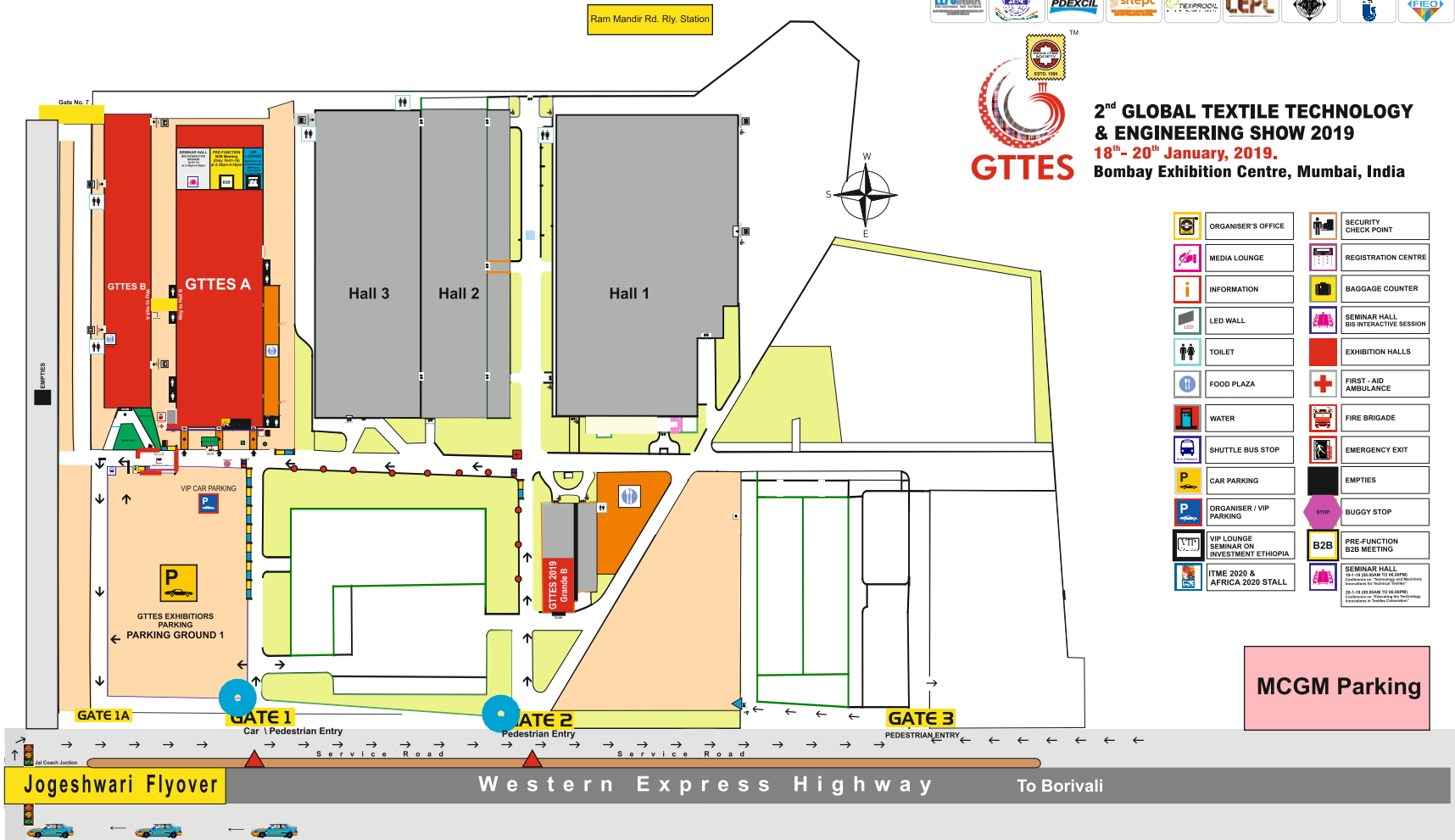
Michael Dalmet - 9892972488
Nitin Pachpande - 9869394998
Bhupendra Thakur - 9819904076

GTTES 2019 - VENUE LAYOUT

Supported by

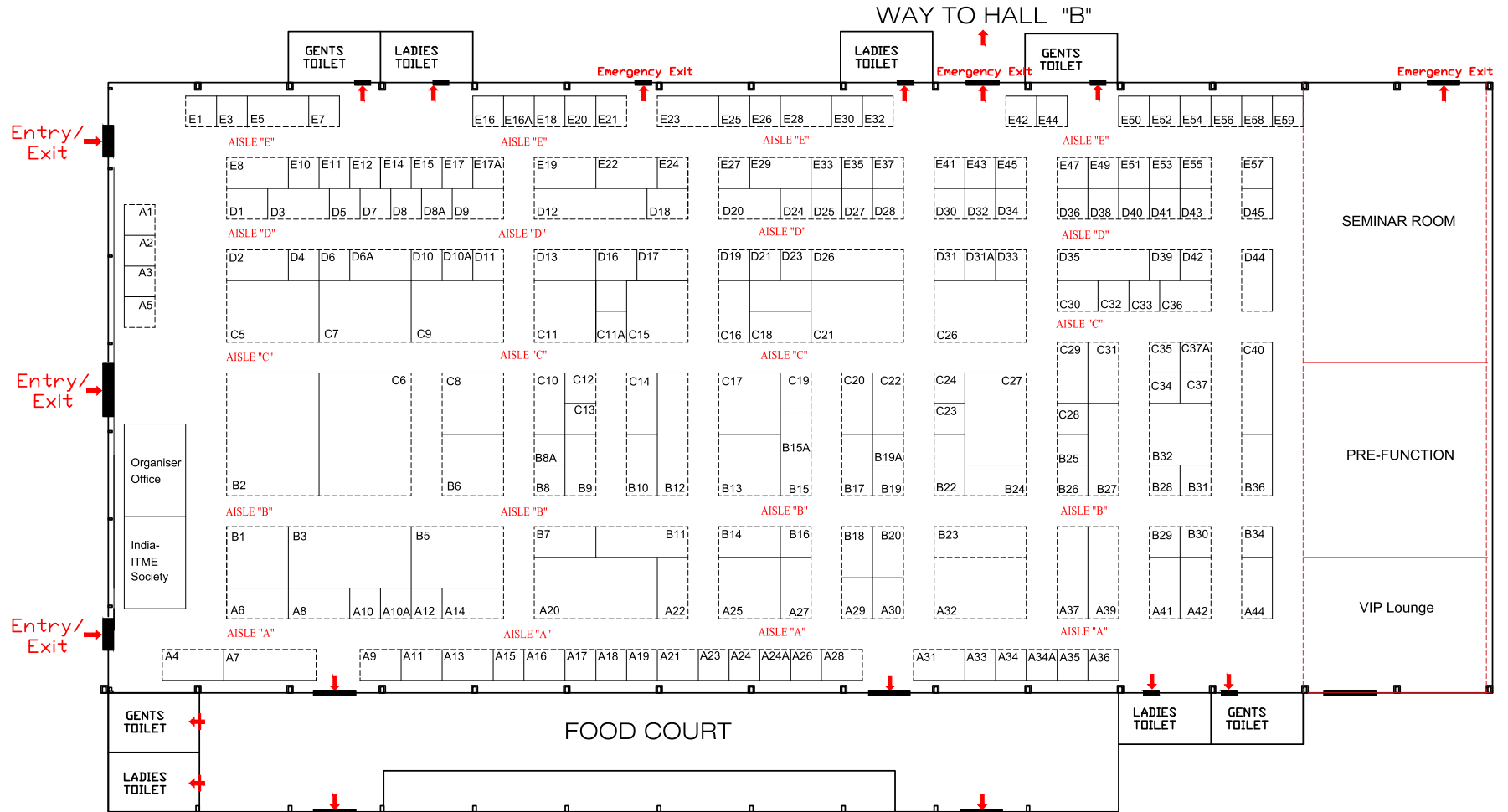


**2nd GLOBAL TEXTILE TECHNOLOGY
& ENGINEERING SHOW 2019**
18th - 20th January, 2019.
Bombay Exhibition Centre, Mumbai, India

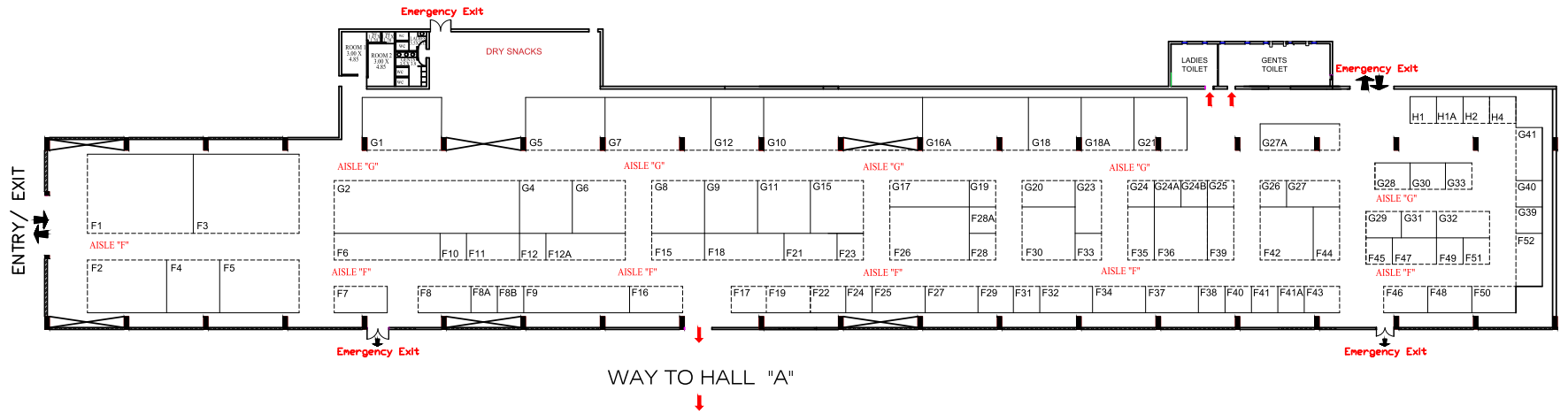


	ORGANISER'S OFFICE		SECURITY CHECK POINT
	MEDIA LOUNGE		REGISTRATION CENTRE
	INFORMATION		BAGGAGE COUNTER
	LED WALL		SEMINAR HALL B2B INTERACTIVE SESSION
	TOILET		EXHIBITION HALLS
	FOOD PLAZA		FIRST-AID AMBULANCE
	WATER		FIRE BRIGADE
	SHUTTLE BUS STOP		EMERGENCY EXIT
	CAR PARKING		EMPTY
	ORGANISER / VIP PARKING		BUGGY STOP
	VIP LOUNGE SEMINAR ON INVESTMENT ETHIOPIA		PRE-FUNCTION B2B MEETING
	ITME 2020 & AFRICA 2020 STALL		SEMINAR HALL B2B (18-19 JANUARY 10-12.00PM, 13-14.00PM, 15-16.00PM, 17-18.00PM, 19-20.00PM, 21-22.00PM, 23-24.00PM, 25-26.00PM, 27-28.00PM, 29-30.00PM, 31-32.00PM, 33-34.00PM, 35-36.00PM, 37-38.00PM, 39-40.00PM, 41-42.00PM, 43-44.00PM, 45-46.00PM, 47-48.00PM, 49-50.00PM, 51-52.00PM, 53-54.00PM, 55-56.00PM, 57-58.00PM, 59-60.00PM, 61-62.00PM, 63-64.00PM, 65-66.00PM, 67-68.00PM, 69-70.00PM, 71-72.00PM, 73-74.00PM, 75-76.00PM, 77-78.00PM, 79-80.00PM, 81-82.00PM, 83-84.00PM, 85-86.00PM, 87-88.00PM, 89-90.00PM, 91-92.00PM, 93-94.00PM, 95-96.00PM, 97-98.00PM, 99-100.00PM, 101-102.00PM, 103-104.00PM, 105-106.00PM, 107-108.00PM, 109-110.00PM, 111-112.00PM, 113-114.00PM, 115-116.00PM, 117-118.00PM, 119-120.00PM, 121-122.00PM, 123-124.00PM, 125-126.00PM, 127-128.00PM, 129-130.00PM, 131-132.00PM, 133-134.00PM, 135-136.00PM, 137-138.00PM, 139-140.00PM, 141-142.00PM, 143-144.00PM, 145-146.00PM, 147-148.00PM, 149-150.00PM, 151-152.00PM, 153-154.00PM, 155-156.00PM, 157-158.00PM, 159-160.00PM, 161-162.00PM, 163-164.00PM, 165-166.00PM, 167-168.00PM, 169-170.00PM, 171-172.00PM, 173-174.00PM, 175-176.00PM, 177-178.00PM, 179-180.00PM, 181-182.00PM, 183-184.00PM, 185-186.00PM, 187-188.00PM, 189-190.00PM, 191-192.00PM, 193-194.00PM, 195-196.00PM, 197-198.00PM, 199-200.00PM, 201-202.00PM, 203-204.00PM, 205-206.00PM, 207-208.00PM, 209-210.00PM, 211-212.00PM, 213-214.00PM, 215-216.00PM, 217-218.00PM, 219-220.00PM, 221-222.00PM, 223-224.00PM, 225-226.00PM, 227-228.00PM, 229-230.00PM, 231-232.00PM, 233-234.00PM, 235-236.00PM, 237-238.00PM, 239-240.00PM, 241-242.00PM, 243-244.00PM, 245-246.00PM, 247-248.00PM, 249-250.00PM, 251-252.00PM, 253-254.00PM, 255-256.00PM, 257-258.00PM, 259-260.00PM, 261-262.00PM, 263-264.00PM, 265-266.00PM, 267-268.00PM, 269-270.00PM, 271-272.00PM, 273-274.00PM, 275-276.00PM, 277-278.00PM, 279-280.00PM, 281-282.00PM, 283-284.00PM, 285-286.00PM, 287-288.00PM, 289-290.00PM, 291-292.00PM, 293-294.00PM, 295-296.00PM, 297-298.00PM, 299-300.00PM, 301-302.00PM, 303-304.00PM, 305-306.00PM, 307-308.00PM, 309-310.00PM, 311-312.00PM, 313-314.00PM, 315-316.00PM, 317-318.00PM, 319-320.00PM, 321-322.00PM, 323-324.00PM, 325-326.00PM, 327-328.00PM, 329-330.00PM, 331-332.00PM, 333-334.00PM, 335-336.00PM, 337-338.00PM, 339-340.00PM, 341-342.00PM, 343-344.00PM, 345-346.00PM, 347-348.00PM, 349-350.00PM, 351-352.00PM, 353-354.00PM, 355-356.00PM, 357-358.00PM, 359-360.00PM, 361-362.00PM, 363-364.00PM, 365-366.00PM, 367-368.00PM, 369-370.00PM, 371-372.00PM, 373-374.00PM, 375-376.00PM, 377-378.00PM, 379-380.00PM, 381-382.00PM, 383-384.00PM, 385-386.00PM, 387-388.00PM, 389-390.00PM, 391-392.00PM, 393-394.00PM, 395-396.00PM, 397-398.00PM, 399-400.00PM, 401-402.00PM, 403-404.00PM, 405-406.00PM, 407-408.00PM, 409-410.00PM, 411-412.00PM, 413-414.00PM, 415-416.00PM, 417-418.00PM, 419-420.00PM, 421-422.00PM, 423-424.00PM, 425-426.00PM, 427-428.00PM, 429-430.00PM, 431-432.00PM, 433-434.00PM, 435-436.00PM, 437-438.00PM, 439-440.00PM, 441-442.00PM, 443-444.00PM, 445-446.00PM, 447-448.00PM, 449-450.00PM, 451-452.00PM, 453-454.00PM, 455-456.00PM, 457-458.00PM, 459-460.00PM, 461-462.00PM, 463-464.00PM, 465-466.00PM, 467-468.00PM, 469-470.00PM, 471-472.00PM, 473-474.00PM, 475-476.00PM, 477-478.00PM, 479-480.00PM, 481-482.00PM, 483-484.00PM, 485-486.00PM, 487-488.00PM, 489-490.00PM, 491-492.00PM, 493-494.00PM, 495-496.00PM, 497-498.00PM, 499-500.00PM, 501-502.00PM, 503-504.00PM, 505-506.00PM, 507-508.00PM, 509-510.00PM, 511-512.00PM, 513-514.00PM, 515-516.00PM, 517-518.00PM, 519-520.00PM, 521-522.00PM, 523-524.00PM, 525-526.00PM, 527-528.00PM, 529-530.00PM, 531-532.00PM, 533-534.00PM, 535-536.00PM, 537-538.00PM, 539-540.00PM, 541-542.00PM, 543-544.00PM, 545-546.00PM, 547-548.00PM, 549-550.00PM, 551-552.00PM, 553-554.00PM, 555-556.00PM, 557-558.00PM, 559-560.00PM, 561-562.00PM, 563-564.00PM, 565-566.00PM, 567-568.00PM, 569-570.00PM, 571-572.00PM, 573-574.00PM, 575-576.00PM, 577-578.00PM, 579-580.00PM, 581-582.00PM, 583-584.00PM, 585-586.00PM, 587-588.00PM, 589-590.00PM, 591-592.00PM, 593-594.00PM, 595-596.00PM, 597-598.00PM, 599-600.00PM, 601-602.00PM, 603-604.00PM, 605-606.00PM, 607-608.00PM, 609-610.00PM, 611-612.00PM, 613-614.00PM, 615-616.00PM, 617-618.00PM, 619-620.00PM, 621-622.00PM, 623-624.00PM, 625-626.00PM, 627-628.00PM, 629-630.00PM, 631-632.00PM, 633-634.00PM, 635-636.00PM, 637-638.00PM, 639-640.00PM, 641-642.00PM, 643-644.00PM, 645-646.00PM, 647-648.00PM, 649-650.00PM, 651-652.00PM, 653-654.00PM, 655-656.00PM, 657-658.00PM, 659-660.00PM, 661-662.00PM, 663-664.00PM, 665-666.00PM, 667-668.00PM, 669-670.00PM, 671-672.00PM, 673-674.00PM, 675-676.00PM, 677-678.00PM, 679-680.00PM, 681-682.00PM, 683-684.00PM, 685-686.00PM, 687-688.00PM, 689-690.00PM, 691-692.00PM, 693-694.00PM, 695-696.00PM, 697-698.00PM, 699-700.00PM, 701-702.00PM, 703-704.00PM, 705-706.00PM, 707-708.00PM, 709-710.00PM, 711-712.00PM, 713-714.00PM, 715-716.00PM, 717-718.00PM, 719-720.00PM, 721-722.00PM, 723-724.00PM, 725-726.00PM, 727-728.00PM, 729-730.00PM, 731-732.00PM, 733-734.00PM, 735-736.00PM, 737-738.00PM, 739-740.00PM, 741-742.00PM, 743-744.00PM, 745-746.00PM, 747-748.00PM, 749-750.00PM, 751-752.00PM, 753-754.00PM, 755-756.00PM, 757-758.00PM, 759-760.00PM, 761-762.00PM, 763-764.00PM, 765-766.00PM, 767-768.00PM, 769-770.00PM, 771-772.00PM, 773-774.00PM, 775-776.00PM, 777-778.00PM, 779-780.00PM, 781-782.00PM, 783-784.00PM, 785-786.00PM, 787-788.00PM, 789-790.00PM, 791-792.00PM, 793-794.00PM, 795-796.00PM, 797-798.00PM, 799-800.00PM, 801-802.00PM, 803-804.00PM, 805-806.00PM, 807-808.00PM, 809-810.00PM, 811-812.00PM, 813-814.00PM, 815-816.00PM, 817-818.00PM, 819-820.00PM, 821-822.00PM, 823-824.00PM, 825-826.00PM, 827-828.00PM, 829-830.00PM, 831-832.00PM, 833-834.00PM, 835-836.00PM, 837-838.00PM, 839-840.00PM, 841-842.00PM, 843-844.00PM, 845-846.00PM, 847-848.00PM, 849-850.00PM, 851-852.00PM, 853-854.00PM, 855-856.00PM, 857-858.00PM, 859-860.00PM, 861-862.00PM, 863-864.00PM, 865-866.00PM, 867-868.00PM, 869-870.00PM, 871-872.00PM, 873-874.00PM, 875-876.00PM, 877-878.00PM, 879-880.00PM, 881-882.00PM, 883-884.00PM, 885-886.00PM, 887-888.00PM, 889-890.00PM, 891-892.00PM, 893-894.00PM, 895-896.00PM, 897-898.00PM, 899-900.00PM, 901-902.00PM, 903-904.00PM, 905-906.00PM, 907-908.00PM, 909-910.00PM, 911-912.00PM, 913-914.00PM, 915-916.00PM, 917-918.00PM, 919-920.00PM, 921-922.00PM, 923-924.00PM, 925-926.00PM, 927-928.00PM, 929-930.00PM, 931-932.00PM, 933-934.00PM, 935-936.00PM, 937-938.00PM, 939-940.00PM, 941-942.00PM, 943-944.00PM, 945-946.00PM, 947-948.00PM, 949-950.00PM, 951-952.00PM, 953-954.00PM, 955-956.00PM, 957-958.00PM, 959-960.00PM, 961-962.00PM, 963-964.00PM, 965-966.00PM, 967-968.00PM, 969-970.00PM, 971-972.00PM, 973-974.00PM, 975-976.00PM, 977-978.00PM, 979-980.00PM, 981-982.00PM, 983-984.00PM, 985-986.00PM, 987-988.00PM, 989-990.00PM, 991-992.00PM, 993-994.00PM, 995-996.00PM, 997-998.00PM, 999-1000.00PM, 1001-1002.00PM, 1003-1004.00PM, 1005-1006.00PM, 1007-1008.00PM, 1009-1010.00PM, 1011-1012.00PM, 1013-1014.00PM, 1015-1016.00PM, 1017-1018.00PM, 1019-1020.00PM, 1021-1022.00PM, 1023-1024.00PM, 1025-1026.00PM, 1027-1028.00PM, 1029-1030.00PM, 1031-1032.00PM, 1033-1034.00PM, 1035-1036.00PM, 1037-1038.00PM, 1039-1040.00PM, 1041-1042.00PM, 1043-1044.00PM, 1045-1046.00PM, 1047-1048.00PM, 1049-1050.00PM, 1051-1052.00PM, 1053-1054.00PM, 1055-1056.00PM, 1057-1058.00PM, 1059-1060.00PM, 1061-1062.00PM, 1063-1064.00PM, 1065-1066.00PM, 1067-1068.00PM, 1069-1070.00PM, 1071-1072.00PM, 1073-1074.00PM, 1075-1076.00PM, 1077-1078.00PM, 1079-1080.00PM, 1081-1082.00PM, 1083-1084.00PM, 1085-1086.00PM, 1087-1088.00PM, 1089-1090.00PM, 1091-1092.00PM, 1093-1094.00PM, 1095-1096.00PM, 1097-1098.00PM, 1099-1100.00PM, 1101-1102.00PM, 1103-1104.00PM, 1105-1106.00PM, 1107-1108.00PM, 1109-1110.00PM, 1111-1112.00PM, 1113-1114.00PM, 1115-1116.00PM, 1117-1118.00PM, 1119-1120.00PM, 1121-1122.00PM, 1123-1124.00PM, 1125-1126.00PM, 1127-1128.00PM, 1129-1130.00PM, 1131-1132.00PM, 1133-1134.00PM, 1135-1136.00PM, 1137-1138.00PM, 1139-1140.00PM, 1141-1142.00PM, 1143-1144.00PM, 1145-1146.00PM, 1147-1148.00PM, 1149-1150.00PM, 1151-1152.00PM, 1153-1154.00PM, 1155-1156.00PM, 1157-1158.00PM, 1159-1160.00PM, 1161-1162.00PM, 1163-1164.00PM, 1165-1166.00PM, 1167-1168.00PM, 1169-1170.00PM, 1171-1172.00PM, 1173-1174.00PM, 1175-1176.00PM, 1177-1178.00PM, 1179-1180.00PM, 1181-1182.00PM, 1183-1184.00PM, 1185-1186.00PM, 1187-1188.00PM, 1189-1190.00PM, 1191-1192.00PM, 1193-1194.00PM, 1195-1196.00PM, 1197-1198.00PM, 1199-1200.00PM, 1201-1202.00PM, 1203-1204.00PM, 1205-1206.00PM, 1207-1208.00PM, 1209-1210.00PM, 1211-1212.00PM, 1213-1214.00PM, 1215-1216.00PM, 1217-1218.00PM, 1219-1220.00PM, 1221-1222.00PM, 1223-1224.00PM, 1225-1226.00PM, 1227-1228.00PM, 1229-1230.00PM, 1231-1232.00PM, 1233-1234.00PM, 1235-1236.00PM, 1237-1238.00PM, 1239-1240.00PM, 1241-1242.00PM, 1243-1244.00PM, 1245-1246.00PM, 1247-1248.00PM, 1249-1250.00PM, 1251-1252.00PM, 1253-1254.00PM, 1255-1256.00PM, 1257-1258.00PM, 1259-1260.00PM, 1261-1262.00PM, 1263-1264.00PM, 1265-1266.00PM, 1267-1268.00PM, 1269-1270.00PM, 1271-1272.00PM, 1273-1274.00PM, 1275-1276.00PM, 1277-1278.00PM, 1279-1280.00PM, 1281-1282.00PM, 1283-1284.00PM, 1285-1286.00PM, 1287-1288.00PM, 1289-1290.00PM, 1291-1292.00PM, 1293-1294.00PM, 1295-1296.00PM, 1297-1298.00PM, 1299-1300.00PM, 1301-1302.00PM, 1303-1304.00PM, 1305-1306.00PM, 1307-1308.00PM, 1309-1310.00PM, 1311-1312.00PM, 1313-1314.00PM, 1315-1316.00PM, 1317-1318.00PM, 1319-1320.00PM, 1321-1322.00PM, 1323-1324.00PM, 1325-1326.00PM, 1327-1328.00PM, 1329-1330.00PM, 1331-1332.00PM, 1333-1334.00PM, 1335-1336.00PM, 1337-1338.00PM, 1339-1340.00PM, 1341-1342.00PM, 1343-1344.00PM, 1345-1346.00PM, 1347-1348.00PM, 1349-1350.00PM, 1351-1352.00PM, 1353-1354.00PM, 1355-1356.00PM, 1357-1358.00PM, 1359-1360.00PM, 1361-1362.00PM, 1363-1364.00PM, 1365-1366.00PM, 1367-1368.00PM, 1369-1370.00PM, 1371-1372.00PM, 1373-1374.00PM, 1375-1376.00PM, 1377-1378.00PM, 1379-1380.00PM, 1381-1382.00PM, 1383-1384.00PM, 1385-1386.00PM, 1387-1388.00PM, 1389-1390.00PM, 1391-1392.00PM, 1393-1394.00PM, 1395-1396.00PM, 1397-1398.00PM, 1399-1400.00PM, 1401-1402.00PM, 1403-1404.00PM, 1405-1406.00PM, 1407-1408.00PM, 1409-1410.00PM, 1411-1412.00PM, 1413-1414.00PM, 1415-1416.00PM, 1417-1418.00PM, 1419-1420.00PM, 1421-1422.00PM, 1423-1424.00PM, 1425-1426.00PM, 1427-1428.00PM, 1429-1430.00PM, 1431-1432.00PM, 1433-1434.00PM, 1435-1436.00PM, 1437-1438.00PM, 1439-1440.00PM, 1441-1442.00PM, 1443-1444.00PM, 1445-1446.00PM, 1447-1448.00PM, 1449-1450.00PM, 1451-1452.00PM, 1453-1454.00PM, 1455-1456.00PM, 1457-1458.00PM, 1459-1460.00PM, 1461-1462.00PM, 1463-1464.00PM, 1465-1466.00PM, 1467-1468.00PM, 1469-1470.00PM, 1471-1472.00PM, 1473-1474.00PM, 1475-1476.00PM, 1477-1478.00PM, 1479-1480.00PM, 1481-1482.00PM, 1483-1484.00PM, 1485-1486.00PM, 1487-1488.00PM, 1489-1490.00PM, 1491-1492.00PM, 1493-1494.00PM, 1495-1496.00PM, 1497-1498.00PM, 1499-1500.00PM, 1501-1502.00PM, 1503-1504.00PM, 1505-1506.00PM, 1507-1508.00PM, 1509-1510.00PM, 1511-1512.00PM, 1513-1514.00PM, 1515-1516.00PM, 1517-1518.00PM, 1519-1520.00PM, 1521-1522.00PM, 1523-1524.00PM, 1525-1526.00PM, 1527-1528.00PM, 1529-1530.00PM, 1531-1532.00PM, 1533-1534.00PM, 1535-1536.00PM, 1537-1538.00PM, 1539-1540.00PM, 1541-1542.00PM, 1543-1544.00PM, 1545-1546.00PM, 1547-1548.00PM, 1549-1550.00PM, 1551-1552.00PM, 1553-1554.00PM, 1555-1556.00PM, 1557-1558.00PM, 1559-1560.00PM, 1561-1562.00PM, 1563-1564.00PM, 1565-1566.00PM, 1567-1568.00PM, 1569-1570.00PM, 1571-1572.00PM, 1573-1574.00PM, 1575-1576.00PM, 1577-1578.00PM, 1579-1580.00PM, 1581-1582.00PM, 1583-1584.00PM, 1585-1586.00PM, 1587-1588.00PM, 1589-1590.00PM, 1591-1592.00PM, 1593-1594.00PM, 1595-1596.00PM, 1597-1598.00PM, 1599-1600.00PM, 1601-1602.00PM, 1603-1604.00PM, 1605-1606.00PM, 1607-1608.00PM, 1609-1610.00PM, 1611-1612.00PM, 1613-1614.00PM, 1615-1616.00PM, 1617-1618.00PM, 1619-1620.00PM, 1621-1622.00PM, 1623-1624.00PM, 1625-1626.00PM, 1627-1628.00PM, 1629-1630.00PM, 1

GTTES - HALL A



GTTES - HALL B



Supported by



Office of the Textile Commissioner,
Ministry of Textiles,
Government of India



Federal Democratic
Republic of Ethiopia



Ethiopian Textile Industry
Development Institute

Trade & Investment Partner



International
Trade
Centre

INDIA ITME SOCIETY

A Catalyst for Growth & Technological Excellence

proudly announces...

International Textiles & Textile Engineering Exhibition

PROSPERITY
FOR
AFRICA
THROUGH
TEXTILE
TECHNOLOGY



TM

14 15 16
February, 2020
Millennium Hall,
Addis Ababa, Ethiopia

Joint Venture



INDIA ITME SOCIETY
A Catalyst for Growth & Technological Excellence



**ETHIOPIAN CHAMBER OF COMMERCE
AND SECTORAL ASSOCIATIONS (ECCSA)**

Africa offers a huge opportunity for the Textile & Clothing Industry
based on its rich heritage of textiles and the strong economic indicators.
It has the potential to become the new Apparel Hub of the world.

The Right Place & The Right Time to

A Aspire **C** Compete **E** Explore

✉ itme@itme-africa.com / itme@india-itme.com

🌐 www.itme-africa.com

Knowledge
Partner



Access to
New Markets
& New Business
Opportunities

Scope for
Joint Ventures
& Investments

International
Exposure &
Networking

Access to
Finance &
Liasoning

Competitive
Price

End to End
Solutions for
Textiles,
Technology &
Engineering

Tax Incentives & Govt. support for doing Business with Africa

Celebrate Innovation - Salute the 'Soul of Textiles'



INDIA ITME SOCIETY



INDIA ITME 2020

*10th - 15th December, 2020
India Exposition Mart,
Knowledge Park-II, Greater Noida*

**International Exhibition
Showcasing 21 Chapters
Encompassing the entire value chain of
Textiles, Textile Engineering & Services.**

INDIA INTERNATIONAL TEXTILE MACHINERY EXHIBITIONS SOCIETY

A-1210/1211 Dalamal Tower, Nariman Point, Mumbai - 400 021, Maharashtra, India.

Contact : +91-22-4972 4603 / 9820507570

Email: itme@india-itme.com Website: www.india-itme.com



INDIA ITME SOCIETY

A Catalyst for Growth & Technological Excellence

India International Textile Machinery Exhibitions Society or the 'India ITME Society' is a non profit apex industry body established in 1980, to support and serve the Textile Engineering Industry through Exhibitions & Events. Today, India ITME Society plays a pivotal role in strengthening the domestic as well as international Textile Industry by facilitating exchange of knowledge, technology transfer & encourages Foreign Direct Investments & Joint Ventures etc.

In the 80's, India had a nascent Textile industry, with negligible presence in the global market. India ITME Society aimed at bringing national and international textile machinery manufacturing companies and Textile technologists on a grand single platform, the India ITME Exhibition, which today is an iconic brand in Exhibitions globally.

India ITME Society has been successfully serving the Industry for almost 4 decades and hosts 2 Mega International Textile Technology events in India addressing different aspects of industry requirements and focusing on future technology. i.e. 'India ITME' & 'Global Textile Technology Engineering Show (GTTES)' and has a new feather added to its Cap its first International Exhibition 'ITME AFRICA'

In its efforts to optimize opportunities for interacting with new customers & products, India ITME Society hosts ITME Networking Zone (IIN Zone). This platform is visible around the globe, easily accessible & promoted to Companies, Industry buyers, Government bodies & Associations worldwide. This serves as an excellent marketing tool for Small & Medium Enterprises Agents, Dealers & Service Providers.

Being a public service organization, ITME Society strives to create events where the focus is not in bringing in exhibitors and visitors under one roof but create conducive atmosphere, opportunity and facilitate customer connect and market access not only in domestic market but all across neighbouring regions as well as globally.

Recently India ITME Society was acknowledged & awarded jointly by Economic Times & Indian Exhibition Industry Association as India's Top 10 Exhibition Organisers & INDIA ITME Exhibition ranked 1st Runner up in Top B2B Exhibition, in the Country. India ITME Society has been winning awards in the last 3 consecutive years in multiple categories.

***Empowering Textile Industry Through Technology
is the motto of India ITME Society.***



INDIA INTERNATIONAL TEXTILE MACHINERY EXHIBITIONS SOCIETY

A-1210/1211 Dalamal Tower, Nariman Point, Mumbai - 400 021, Maharashtra, India.

Contact : +91-22-4972 4603 / 9820507570

Email: itme@india-itme.com Website: www.india-itme.com